

Features:

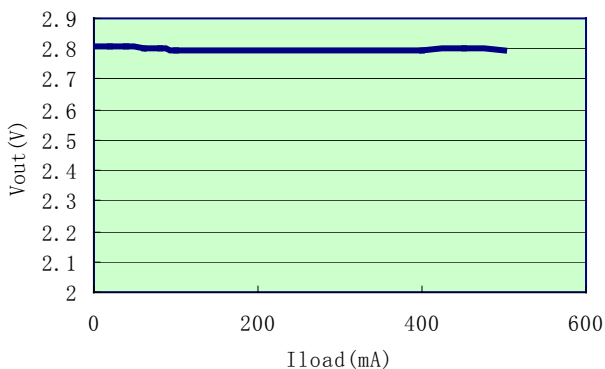
- Low Power Consumption: 75uA (Typ.)
- Low output noise (47uVRMS)
- Standby Mode: 0.1uA
- Low dropout Voltage: 0.46V@500mA (Typ.)
- High Ripple Rejection: 73dB@100Hz (Typ.)
- Low Temperature Coefficient: $\pm 100\text{ppm}/^\circ\text{C}$
- Excellent Line regulation: 0.05%/V
- Build-in chip enable and discharge circuit
- Output Voltage Range: 1.2V~4.5V (customized on command every 0.1V step)
- Highly Accurate: $\pm 2\%$ ($\pm 1\%$ customized)
- Output Current Limit

Applications:

- Power source for cellular phones and various kind of PCSs
- Battery Powered equipment
- Power Management of MP3, PDA, DSC, Mouse, PS2 Games
- Reference Voltage Source
- Regulation after Switching Power

AS2951 Typical Performance Characteristics:

AS2951-2.8V Output

**General Description:**

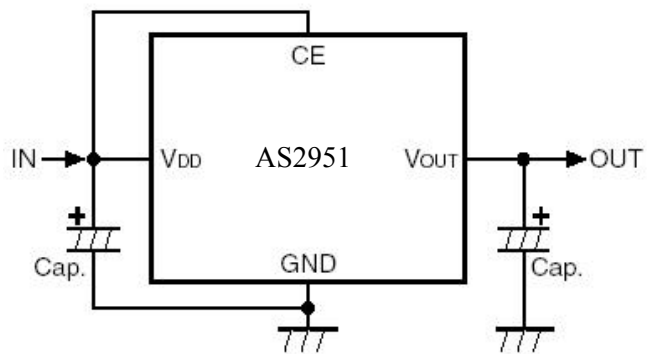
AS2951 series is a group of positive voltage output, low power consumption, low dropout voltage regulator.

AS2951 can provide output value in the range of 1.2V~4.5V every 0.1V step. It also can be customized on command.

AS2951 includes high accuracy voltage reference, error amplifier, current limit circuit and output driver module with discharge capability.

AS2951 has excellent load and line transient response and good temperature characteristics, which can assure the stability of chip and power system. And it uses trimming technique to guarantee output voltage accuracy within $\pm 2\%$.

AS2951 is available in SOT-23-5, SC-70-5 packages which is lead free. It also can be available in these packages with lead.

AS2951 Typical Application Circuit**Application hints:**

NOTE1: Input capacitor ($C_{in}=1\mu\text{F}$) is recommended in all application circuit.

NOTE2: Output capacitor ($C_{out}=3.3\mu\text{F}/4.7\mu\text{F}$) is recommended in all application to assure the stability of circuit.